

NTS TRUCK

ISRI 6860/875 & ISRI 6860/875 Pro



Subject to technical changes for reasons of further development.

State: 10.2008

Version:3

<u>Contents</u>	<u>Page</u>
Important hints	1
Label location	2
System components (before each repair read chapter 1 as well)	3
Complete seat removal	3
<u>Backrest-:</u>	
Backrest recline	4
Backrest adjustment	5
Backrest adjustment lever	6
Shoulder adjustment	9
Lumbar support	7
Seat belt	7
Seat belt guide	6
<u>Cushion Frame-:</u>	
Cushion assembly removal	3
Cushion assembly	6
Cushion slides	3
Side covers for seat frame (Switches for lumbar support)	4
Backrest recline	4
Quick release valve	9
Lever for isolator (Pro Version Only)	11
Shock absorber adjustment	5
Height adjustment	5
Height adjustment lever	12
Slope adjustment	5
<u>Suspension-:</u>	
Air spring	8
Shock absorber	8
Valve for height adjustment	8
Valve adjustment	10
Slide adjustment	3
Height limiting system	10
Shock absorber for isolator	11
Shock absorber for isolator (Pro Version Only)	11
Air line diagram	13
Operators instructions	14
General Inspection of Seat	15
Diagnoses for Squeaky Seat	16
Diagnoses for Excessive Movement	17

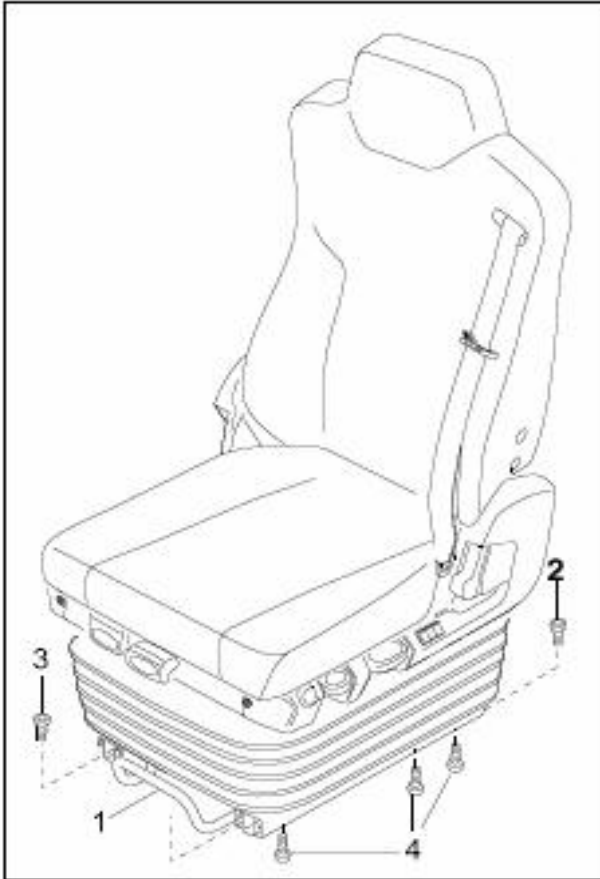
- Seat repairs have to be carried out by competent staff only.
- The presentation in this booklet shows the left hand seat.
- The description in chapter 2 explains the removal of sundry seat components.
The installation of these seat components generally happens in reverse sequence.
- Not all fastening parts for hoses and cables (e.g. cable ties) won't be mentioned in detail.
After repairs it is necessary to put the laying of hoses and cables, as well as the fastening and securing, into original condition.
- Hoses, electrical lines and cables must not be creased.
- Due to safety reasons pay attention to the correct positioning and to the observance of the tightening torques of the fixing screws when exchanging component parts, which lie within the flux line of the belt anchorage points.
- After each repair a functional test and, if pneumatic parts are involved, a leak test has to be effected.

Tightening torques:	M8	=20 Nm +5Nm
	M 10	=22 Nm +/-2Nm
	7/16"UNF-2B	=35 Nm +5Nm

- When unwinding the safety belt from retractor, take care for a retractor position corresponding to the mounting position at the seat.

Serial number is located on the lever side on the lower frame or at the front of the suspension unit and are visible when lifting up the dust boot.



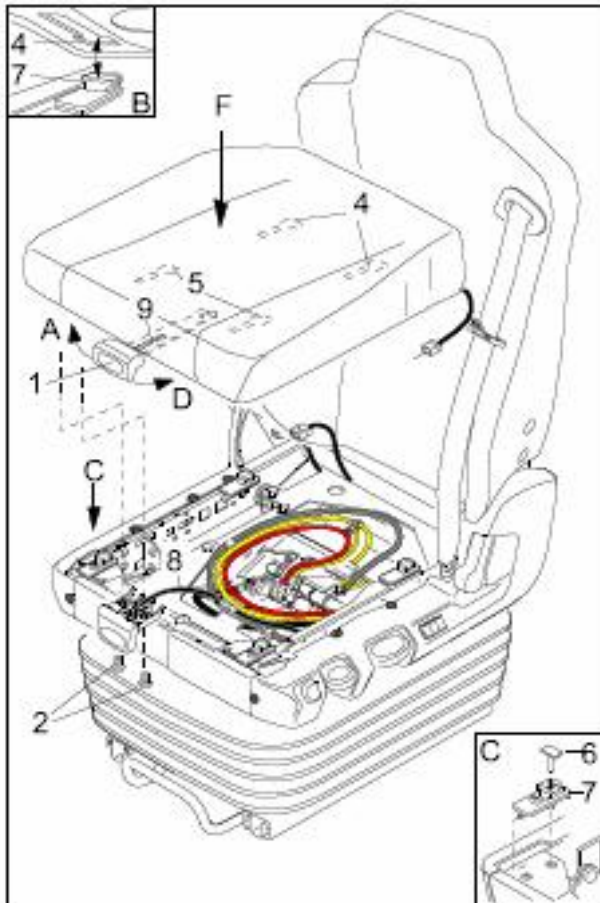


Complete removal of seat:

- Disconnect air supply lines.
- Pull lever (1) upwards, move seat to the front most position and undo screws (2).
- Pull lever (1) upwards, move seat to the rear most position and undo screws (3).

Slide adjustment:

- Remove seat from vehicle (see complete seat).
- Pull lever (1) upwards and move seat in that way, that six screws (4) are reachable through openings in inner slides.
- Undo six screws (4).



Seat cushion / Sliders:

- Lift up lever (1) and push seat cushion to foremost position.
- Undo two screws (2) and remove handle from seat cushion.
- Hold lever (1) in upper position and push it side wards (see arrow (A)).
- Move seat cushion forwards again and lift it up.

Seat cushion mounting:

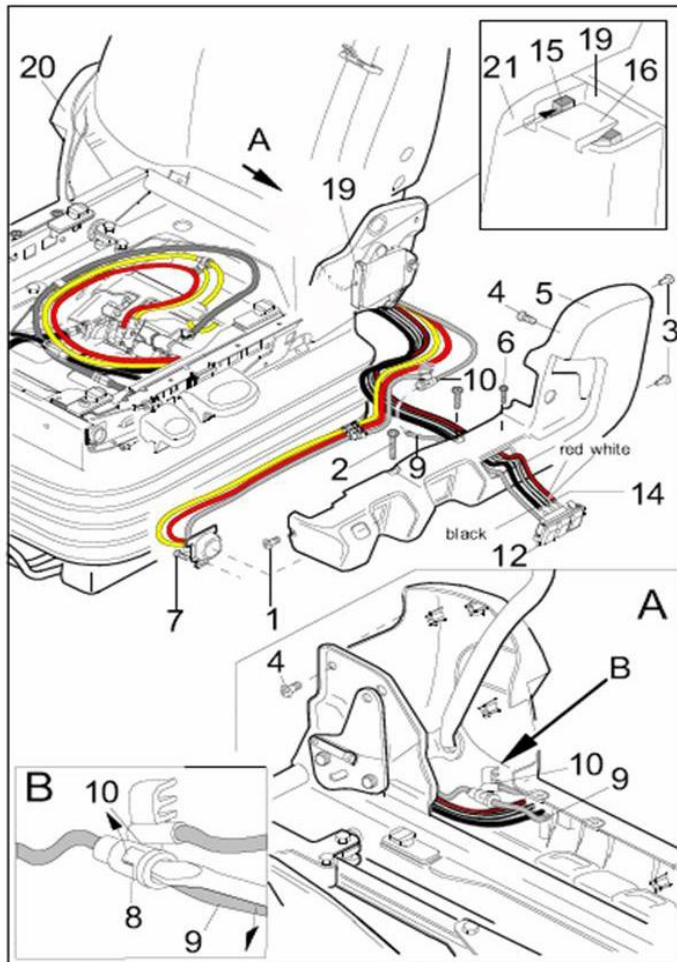
- Cable (8) must be positioned between lever (9) and seat cushion ground plate.
- Lay the keyholes (4) of the seat cushion (on the cushion's bottom side - picture (B)) onto the sliders (7) at the rear.
- Push lever (1) upwards (don't move cushion).
- Press down the seat cushion's front keyholes (5) onto the sliders at the front and press down cushion in direction of arrow (F).
- Push the cushion in direction of backrest (till stop) while still pressing down the complete seat cushion.
- Check now if all four sliders are locked in the keyholes (no vertical movement allowed).
- Push lever (1) in direction of arrow (D) and push cushion further in direction of backrest, till lever (1) engages. Take care, that the cushion is now locked in horizontal and vertical direction.

Exchange of sliders: (picture C)

- Dismantle seat cushion.
- Pull out plastic pin (6) and squeeze out slider (7).

Sliders mounting:

- Mount slider (7) in the seat frame.
- Push in pin (6) (level of pin head flat must fit to the flat of the slider head).



Side covers for seat frame, IPS valve

Cover, lever side:

- Remove seat cushion (Page 4).
- Move seat to the highest position and secure it against lowering (Page 9, shock absorber). Press nose (15) of backrest lever (11) till nose (16) of handle (21) disengages.
- Pull of handle (21) downwards (undo screw if existing) - Unscrew one screw (1), two screws (2) and undo two pins (3).
- Fold backrest completely forwards and undo one screw (4).
- Remove cover (5) from seat frame.

Quick release valve: (see Page 10, too)

- Unscrew one screw (6) and one screw (7) (Old version: 2x (7)).

IPS Valve:

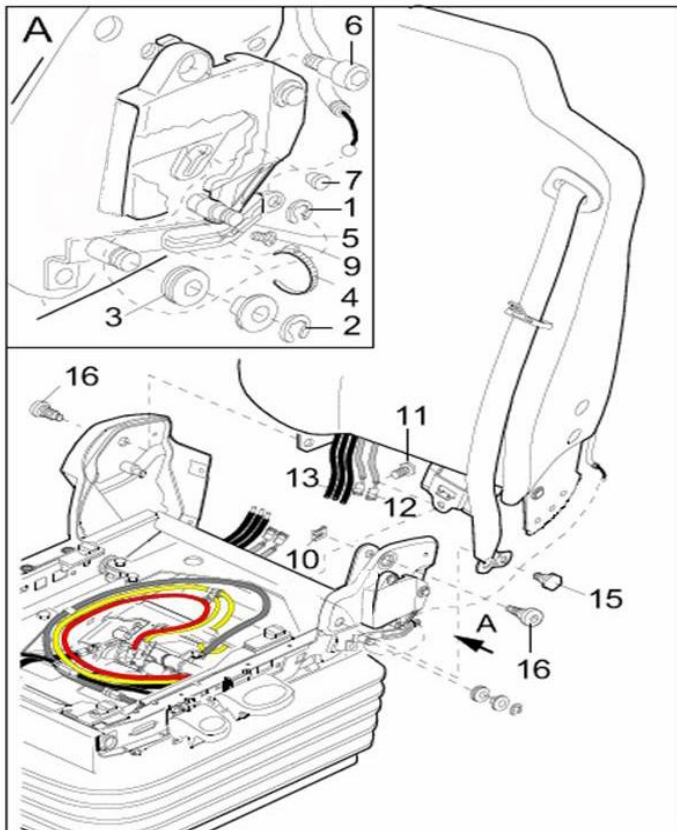
- Lift up fixing hook (8) safely and remove air pipe (9) from Y -connector (10) (see details A, B).
- Disconnect three hoses (14) from valve unit (12).
- Unhook two hooks of valve (12) and push out valve from cover (5).

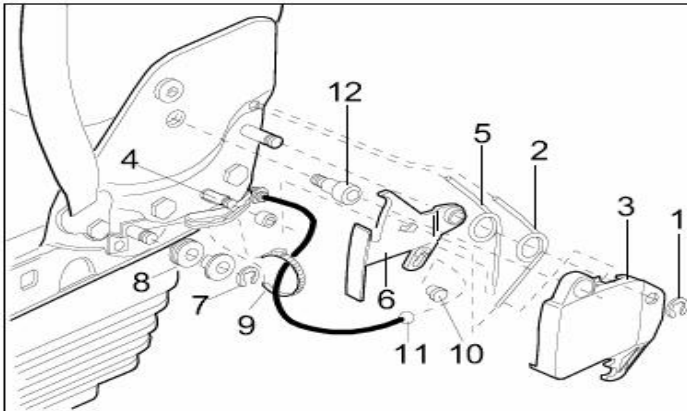
Cover, opposite lever side:

- Remove belt buckle.
- Remove cover (20) in general sense of cover (5).

Backrest recline:

- Adjust to the up most position.
- Remove side covers.
- Remove safety washers (1) (2) and roller (3) (see detail A).
- Cut cable tie (4) (as far as existing) and take cable out of cable guide (5).
- Unscrew (6), pull out securing pin (7) and remove cable from lever (8).
- Unscrew screw (9).
- Undo safety clamp (10).
- Unscrew screw (11).
- Disconnect the three air pipes (13).
- Lift up handle (14) and unscrew (15).
- Unscrew screws (16).
- Lever backrest out of the seat frame brackets.

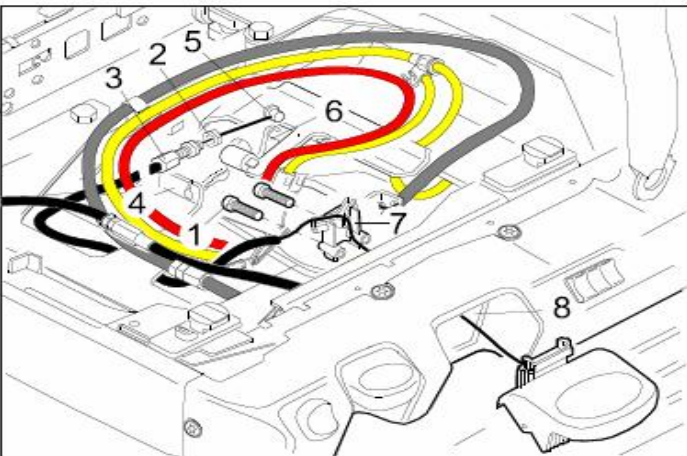




Backrest adjustment lever

Backrest adjustment:

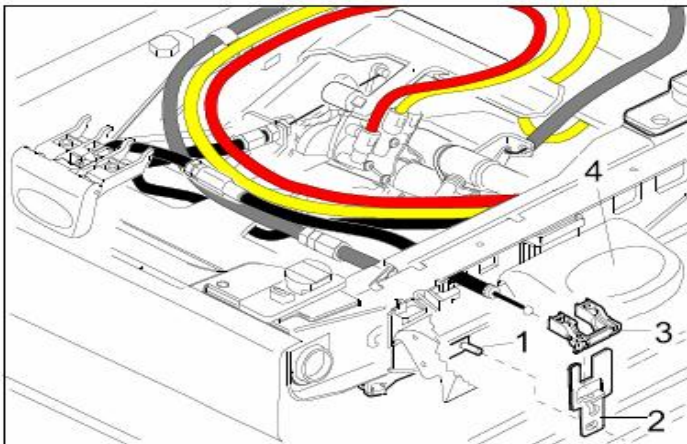
- Remove side cover for seat frame (Page 5, lever side without loosen hoses).
- Remove safety washer (1), remove spring (2) at lever (3) and lever (6). Pull off lever (3).
- Remove spring (5) at pin (4)



Height adjustment:

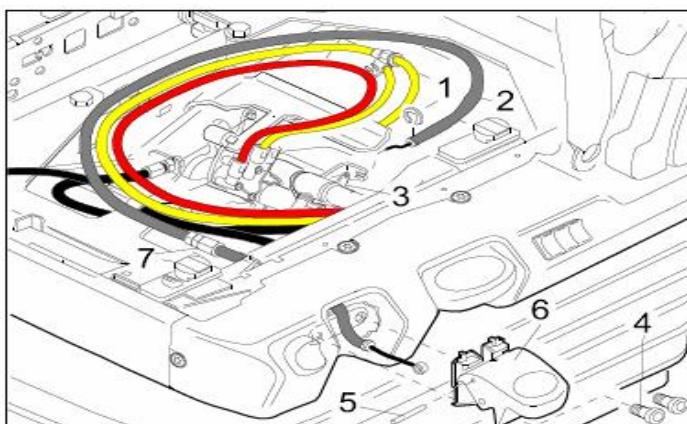
- Remove seat cushion (Page 4).
- Adjust tilting to the up most position.
- Unscrew two screws (1).
- Undo nut (2), remove cable (3) from fastening (4) and pull cable nipple (5) out of valve lever (6).
- Push cable out of bearing (7) and pull it through opening (8).

After refitting: Adjust valve for height adjustment (Page 11).



Slope adjustment:

- Remove seat cushion (Page 4).
- Remove lever for height adjustment (4).
- Remove side cover without disconnecting hoses (Page 5).
- Push in pin (1) till lever (2) hooks out.
- Lever bearing (3) out of seat frame and remove cable from lever (2).

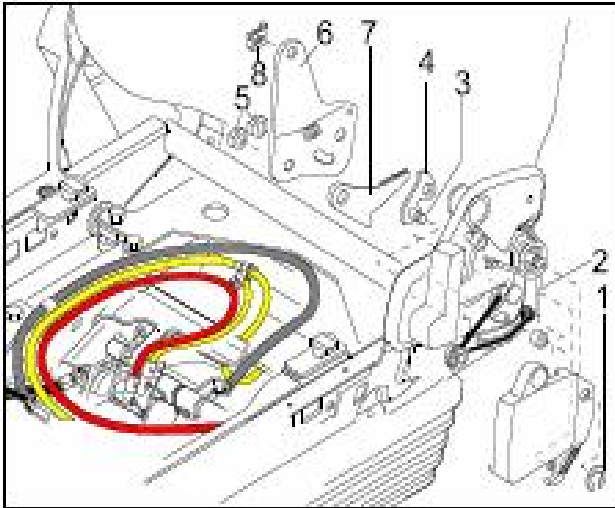


Shock absorber adjustment:

- Remove retaining washer (1) and lever cable (2) out of fastening (3).
- Unscrew two screws (4).
- Knock pin (5) out of lever (6) and pull cable out of seat frame.

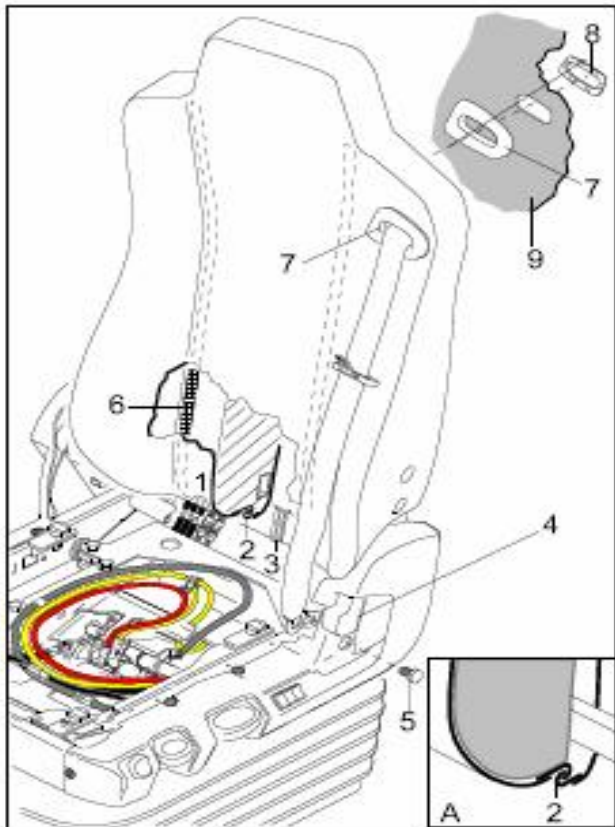
Notice:

- Before refitting seat cushion, loosen locking nut (7).
- Adjust cable (2) that way, that in down most position of adjusting lever, the hardest vertical damping will be achieved.
- Tighten locking nut (7) again.



Backrest adjustment:

- Remove seat cushion (Page 4).
- Remove side cover for seat frame without disconnecting hoses.
- Remove safety washer (1) and loosen springs (2) at pin (3) of lever (4).
- Remove safety clamp (8).
- Unscrew nuts (5) and take out plate (6), tooth segment (7) and lever (4).

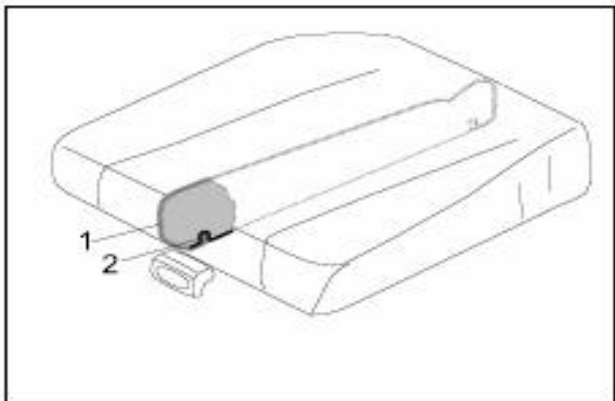


Seat belt guide:

- Disconnect the three hoses.
- Unhook C-profiles (2)(detail A) and (3).
- Lift up lever (4) and undo screw (5) of belt fixation.
- Pull cover upwards and loosen fixing tapes (6).
- Remove cardboard.
- Pull belt through opening (7).
- Remove clamp (8) from belt guide (7) and cover (9).

Hint:

When ordering a new backrest cover, please order belt guide (7) additionally.

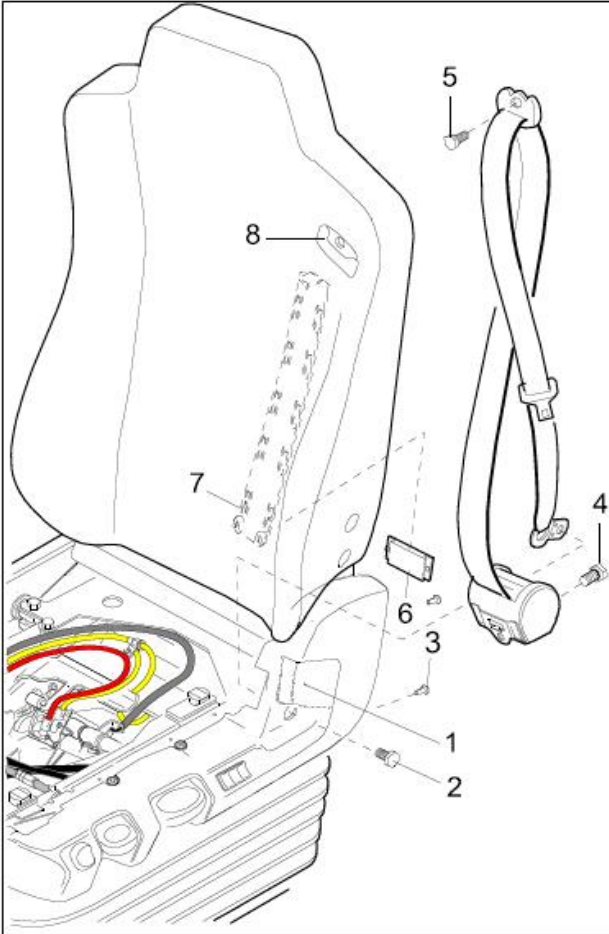


Cushion assembly:

- Dismantle seat cushion (Page 4).
- Lever seat cushion cover (1) out of groove (2), running around seat ground plate.

Notice:

Before refitting the cover, re-bend hooks in the groove (2) from the ground plate, if necessary.

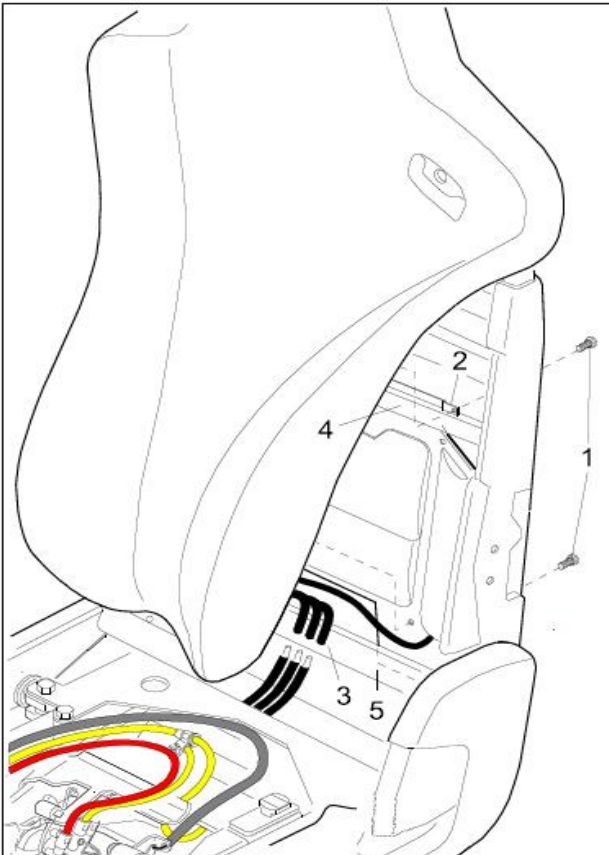


Seat Belt:

- Remove seat cushion (Page 4).
- Remove backrest cover (Page 7).
- Lift up lever (1) and undo screw (2).
- Remove four caps (3) and remove rear cover.
- Undo screws (4) and (5).
- Unhook plate (6) at belt bearing (7).
- Pull belt through opening (8).

NOTE:-

If seat is fitted with pre-tensioner refer to vehicles manufacturer hand book for safe handling prior to commencement of work.



Lumbar support:

- Remove backrest cover partially.
- Unscrew four screws (1) and loosen foam part from frame.

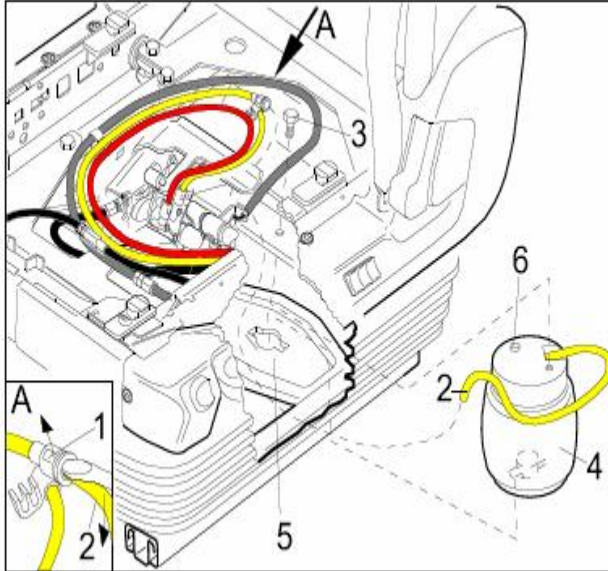
Hint:

Don't tighten screws (1), when refitting the foam part. The distance between screw head and shackle (2) should come to 1 mm.

- Disconnect three hoses (3).
- Pull out air chamber from behind cross-braces (4) (5).

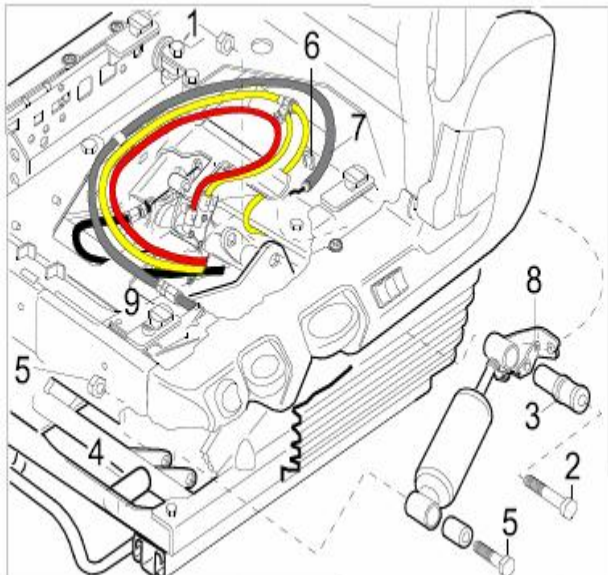
Hint:

When refitting the air chamber unit, take care, that chamber carrier plate has to be refitted behind cross-braces (4)(5).



Air spring:

- Remove seat cushion (Page 4).
- Pull out bust boot fixation in front and side area.
- Secure suspension unit at the highest position by a distance sleeve (length: 75mm)(see shock absorber, position 4).
- Remove lower shock absorber fixation (given below), lift up shock absorber move out air spring front wards.
- Lift up fixing hook (1) safely and demount air pipe (2) (see Detail A).
- Undo screw (3).
- Turn round air spring (4) for 90 degrees and take it out from lower holder (5).
- After refitting the new air spring, nose (6) must fit to the hole at the upper air spring holder.

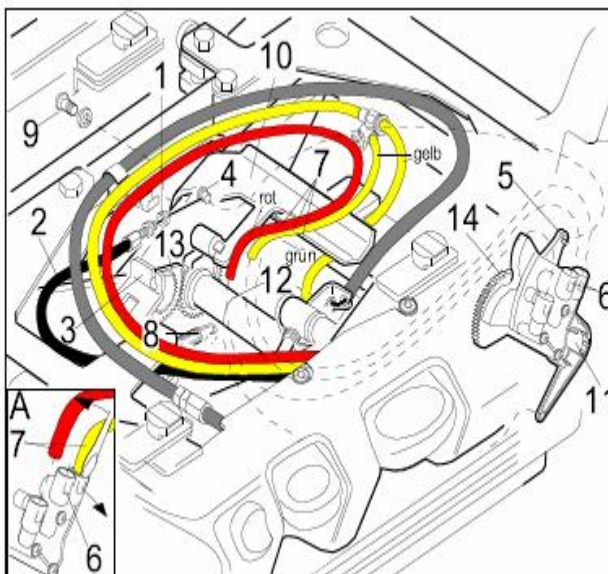


Shock absorber:

- Remove seat cushion (Page 4).
- Pull out lower dust boot fixation.
- Secure suspension unit at the highest position by a distance sleeve (4)(length: 75mm).
- Undo nut (1), loosen screw (2) and remove socket (3).
- Unscrew lower shock absorber fixation (5).
- Remove retaining washer (6) and lever cable (7) out of fastening (8).

Notice:

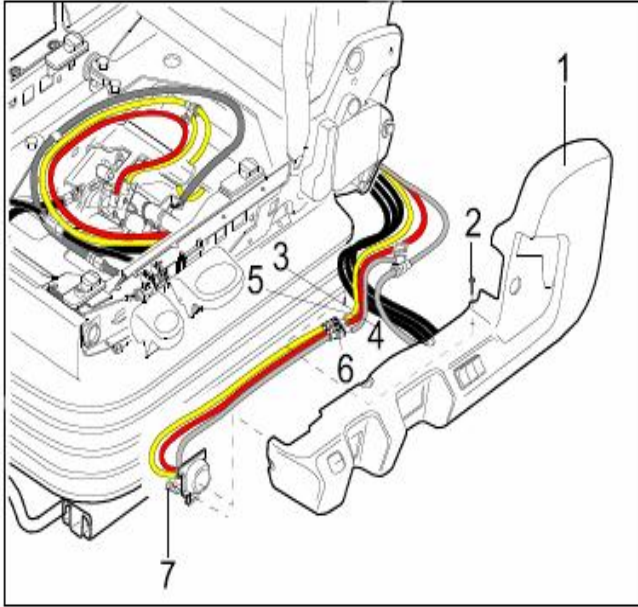
- Before refitting seat cushion, loosen locking nut (9).
- Adjust cable (7) that way, that in down most position of adjusting lever, the hardest vertical damping will be achieved.
- Tighten locking nut (9) again.
- Refer to (Page 5) for cable adjustment.



Valve for height adjustment:

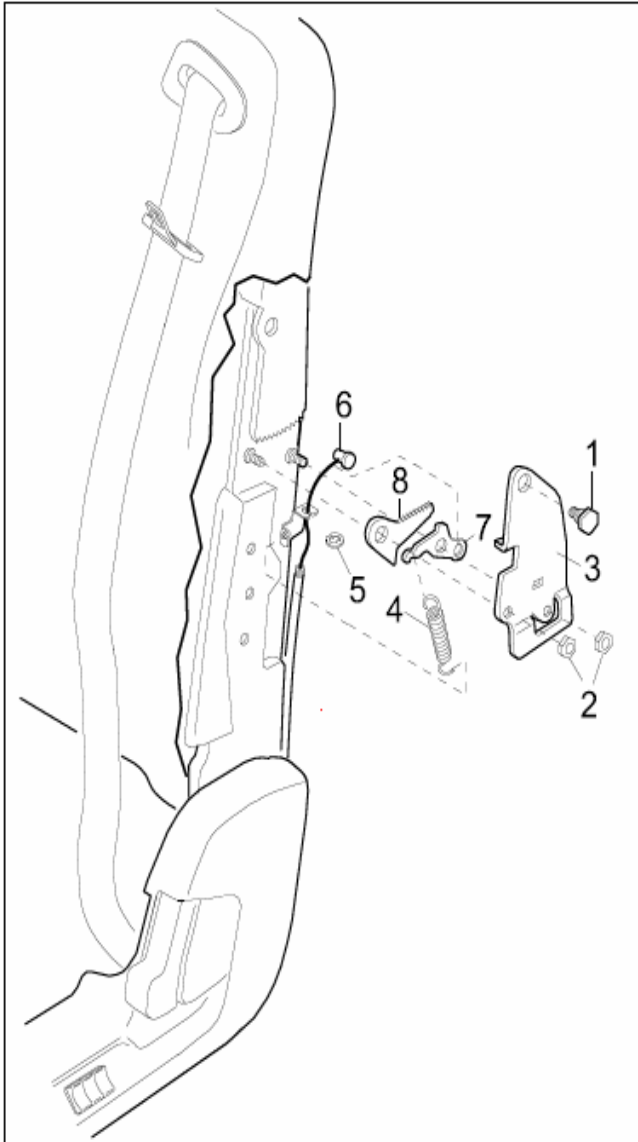
- Remove seat cushion (Page 4).
- Undo nut (1), remove cable (2) from fastening (3) and pull cable nipple (4) out of valve lever (5).
- Lift up fixing hooks (6) safely and remove air pipes (7) (see detail A).
- Unhook spring (8).
- Pull out lower dust boot fixation, undo screw (9) and swivel up bracket (10).
- Turn around valve (11) on its bearing tube and pull it over the bearing tube edge (12).

After refitting: Adjust valve for height adjustment (Page 10).



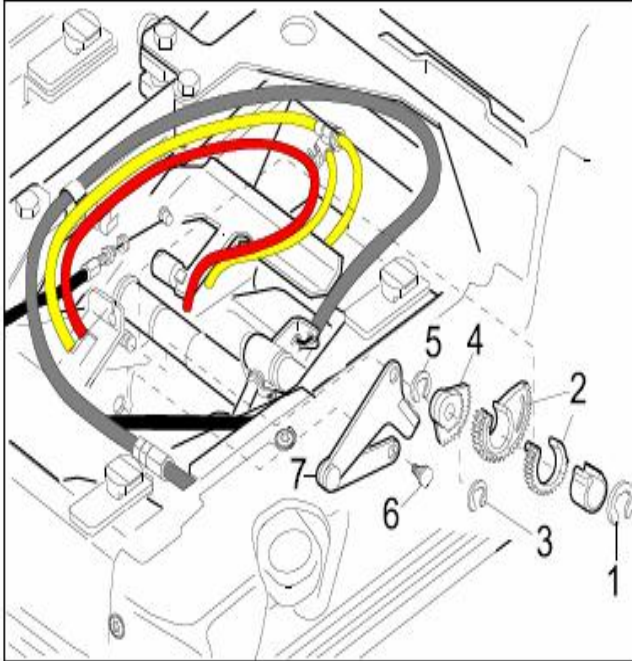
Quick release valve:

- Remove seat cushion (Page 4).
- Remove plastic cover (1) (Page 5).
- Unscrew screw (2).
- Disconnect hoses (3) (4) (5) from connector (6),
- Unscrew screw (7) (old version: 2 x (7)) and unhook switch in the upper area out of cover (1).



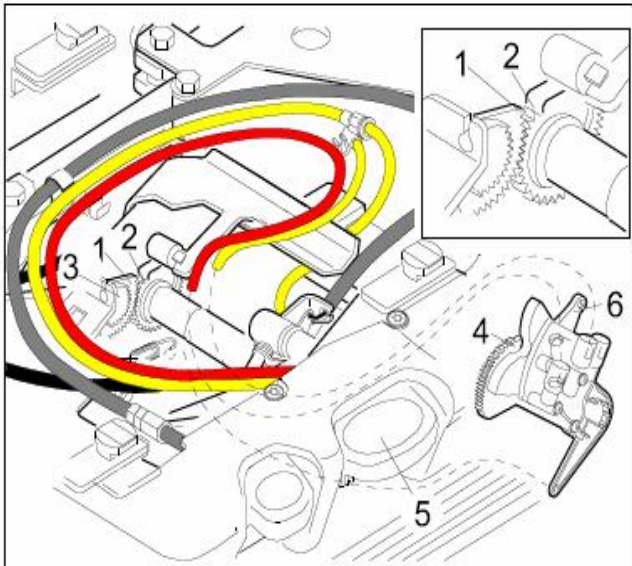
Shoulder adjustment:

- Remove backrest cover and pull it towards to the shoulder area (Page 7).
- Unscrew bolt (1), nuts (2) and take off plate (3).
- Unhook spring (4).
- Undo retaining washer (5) and remove cable (6) from lever (7).
- Take out lever (7) and tooth segment (8).
- Adjust cable as required when fitment of a new cable as required.
- Adjustment is carried out by the two adjustments.
- The first is behind the side covers and the second is at the shoulder point in the backrest.



Height limiting system:

- Remove seat cushion (Page 4).
- Remove valve for height adjustment.
- Undo retaining washer (1) and remove tooth segment (2).
- Undo retaining washer (3) and remove tooth segment (4).
- Undo retaining washer (5), unscrew screw (6) and take out lever (7).
- After replacement adjust height limiting system and valve.



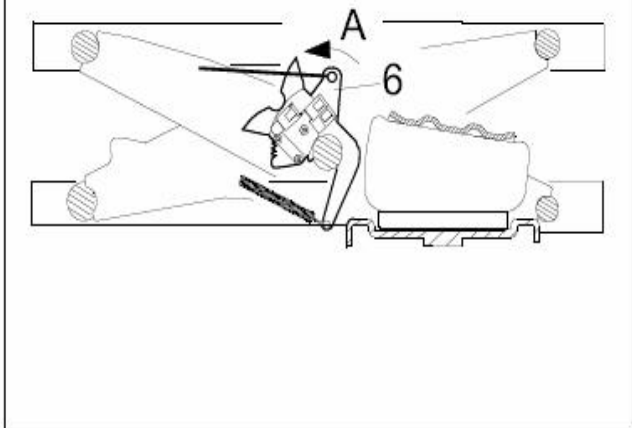
Air Valve Calibration:

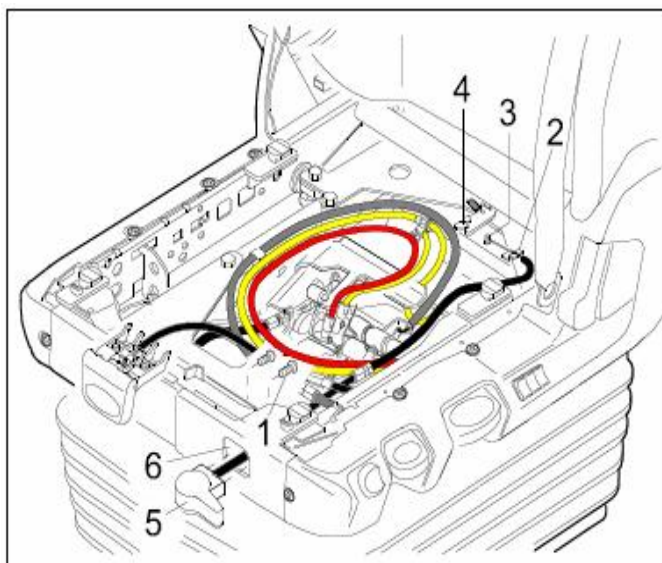
Adjust tooth segments (1) and (2) once again, if they don't fit after removal.

- The topmost tooth of the segment (1) must fit in the topmost space width of segment (2). Check tooth segments (see below, Valve adjustment).
- The topmost tooth of segment (3) must fit in the topmost space width of segment (4).
- After adjusting the tooth segments, look for the segments correct moving over the whole distance. If segments are blocking, the upper tooth don't fit and the segments must be adjusted once again.

Cable adjustment:

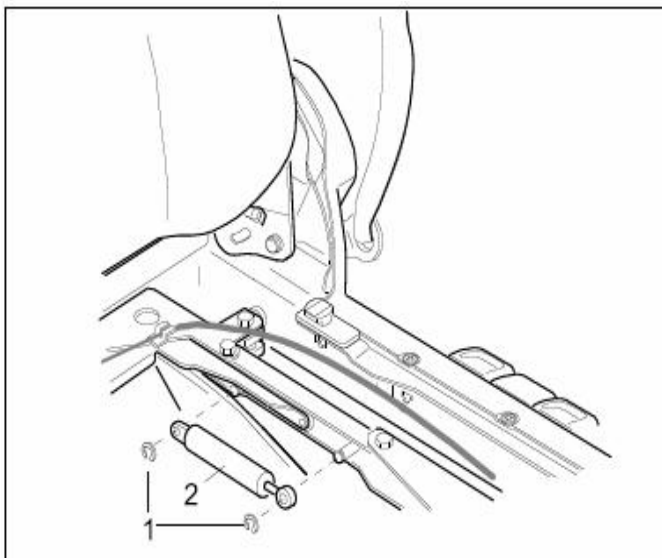
- Pull handle (5) to the up most position and adjust cable for valve for height adjustment in the way, that lever arm (6) has still a little clearance.





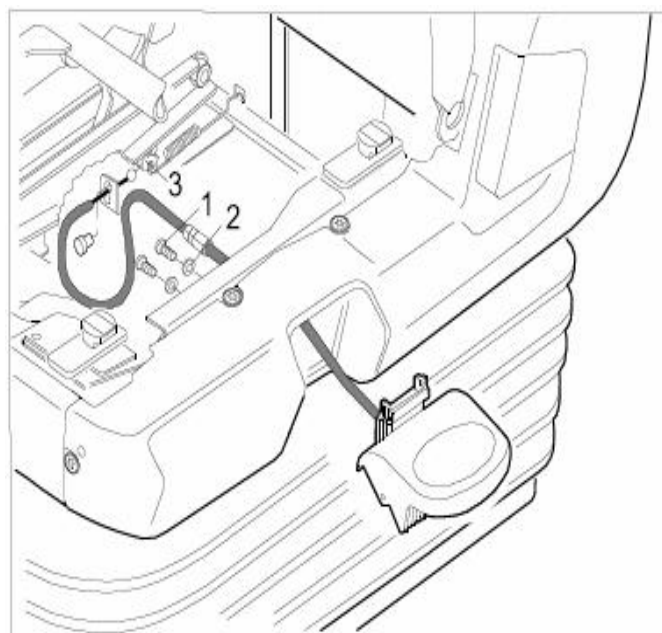
Lever for isolator: (Pro version only)

- Remove seat cushion (Page 4)
- Remove plastic cover (1)(Page 5).
- Unscrew screw (2).
- Disconnect hose (3)(4)(5) from connector (6).
- Unscrew screw (7) (old version: 2x (7)) and unhook switch in upper area out of cover (1).



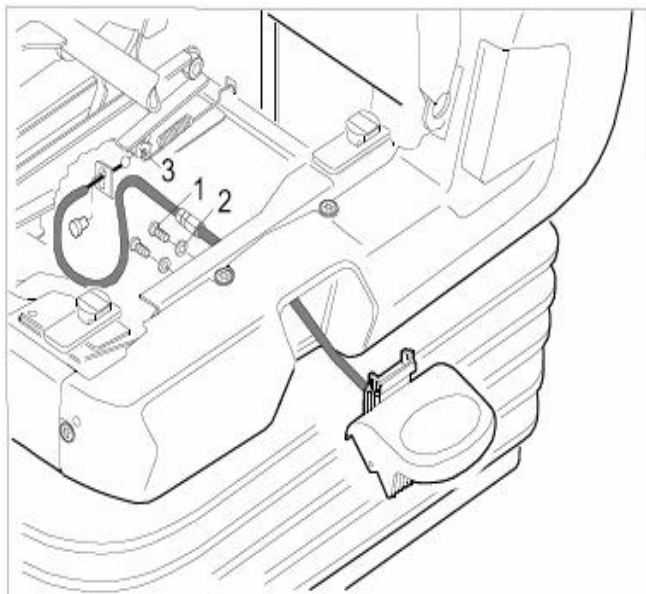
Shock absorber for isolator:(Pro version only)

- Remove seat cushion (Page 4).
- Secure suspension unit at the highest position by a distance sleeve (4)(length: 75mm).
- Remove securing washers (1) and pull off shock absorber from pins.

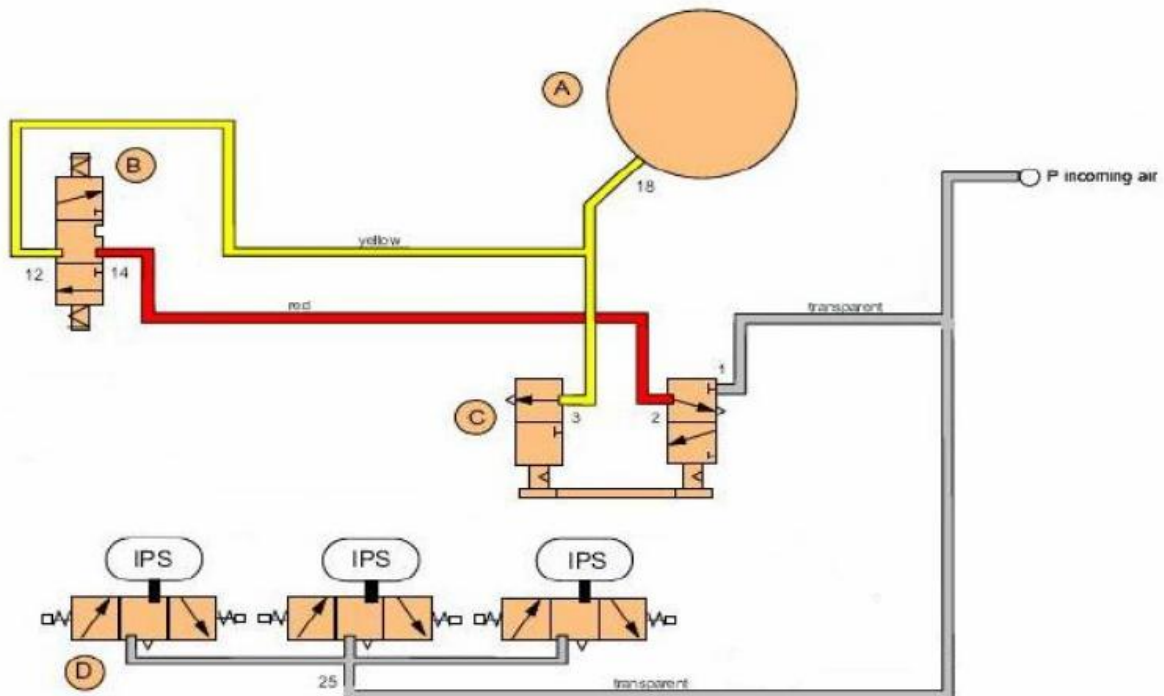
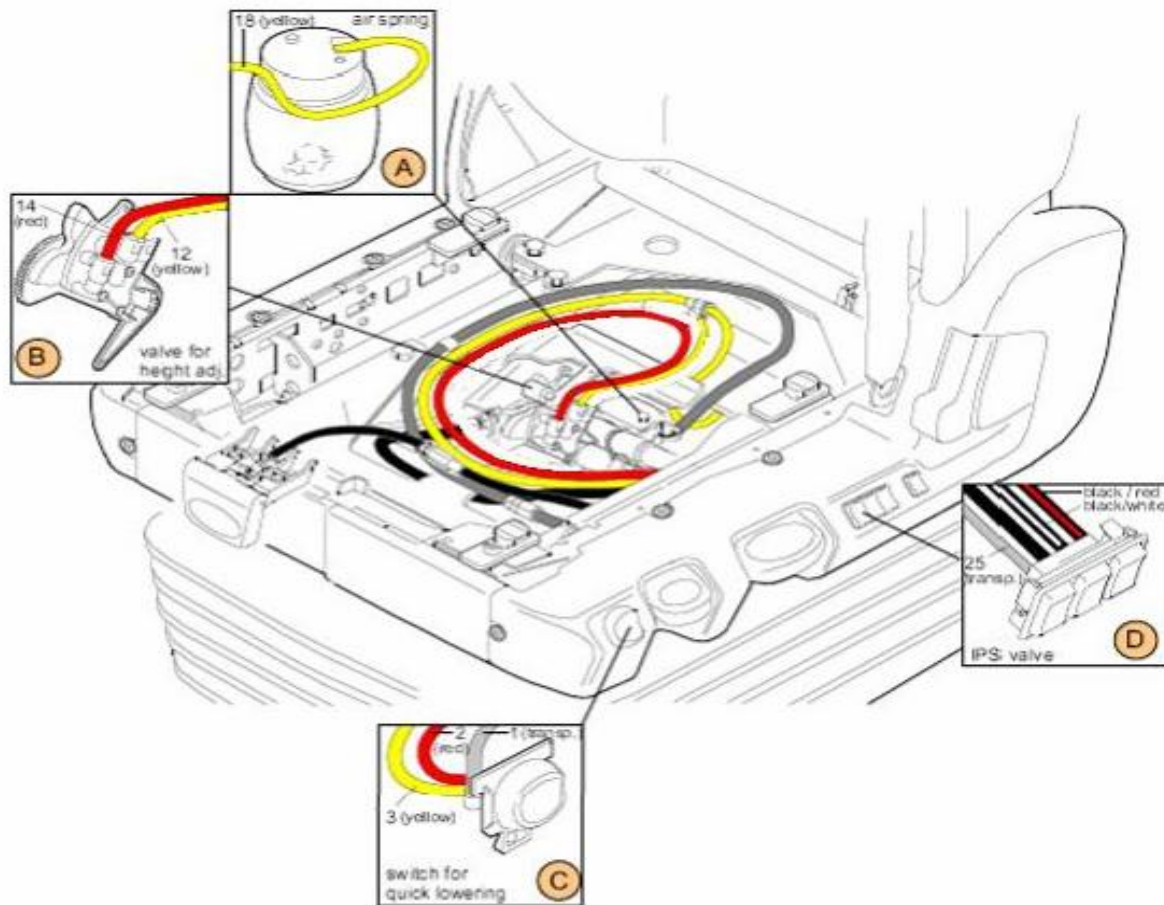


Shock absorber for isolator:(Pro version only)

- Remove seat cushion (Page 4).
- Adjust seat in highest position.
- Take off retaining washer (1).
- Set a small screwdriver in groove (2) and bend upwards clamp (3) of the gas spring.
- Remove gas spring (4) from pin (5).

**Height adjustment lever:**

- Remove seat cushion (Page 4).
- Unscrew (1) and take off washers (2).
- Take off lever for height adjustment from side cover.
- Remove reversing lever (3) to loosen cable at undercarriage.
- While refitting of height adjustment, adjust cable in way that handle of height adjustment has a little clearance.





ISRI NTS 6860/875 Pro - Operator instructions

SAFETY WARNING: VEHICLE MUST BE STATIONARY BEFORE SEAT IS ADJUSTED

Shoulder Adjustment (front lever)

With body against upper backrest lift lever. Use body weight to move upper backrest to required position. Release lever to lock.

Backrest Adjustment (rear lever)

First apply **light** pressure to backrest, then lift lever up and lean rearward against backrest to adjust the backrest inclination. Release lever to lock.

Seat Height Adjust

Gently pull the lever up to raise seat height, gently push down to lower seat height.

Shock Absorber Adjustment

Gently push the lever down for a firmer suspension, lift lever for a softer suspension.

Air Dump Valve

Gently press button in at the top once seated, before exiting press button down.

Seat Tilt Adjust

Gently pull lever up and lean back on the backrest to tilt the seat up. Gently pull the lever up and lean forward to tilt the seat down. Release to lock.



Air Lumbar Support

Two lumbar chambers, Lower (LL) & upper (UL) plus air adjustable side bolsters (SB).

Press the + to Increase and – to decrease. Adjust to give the lumbar region of your back the desired support.

Seat Cushion Adjustment

The seat cushion position can be adjusted, gently pull the lever up whilst sitting on the seat and push hips forward/backwards. Release to lock.

Horizontal Isolator (where fitted)

Push the lever to the right for isolator function to operate, push the lever to the left to lock the isolator.

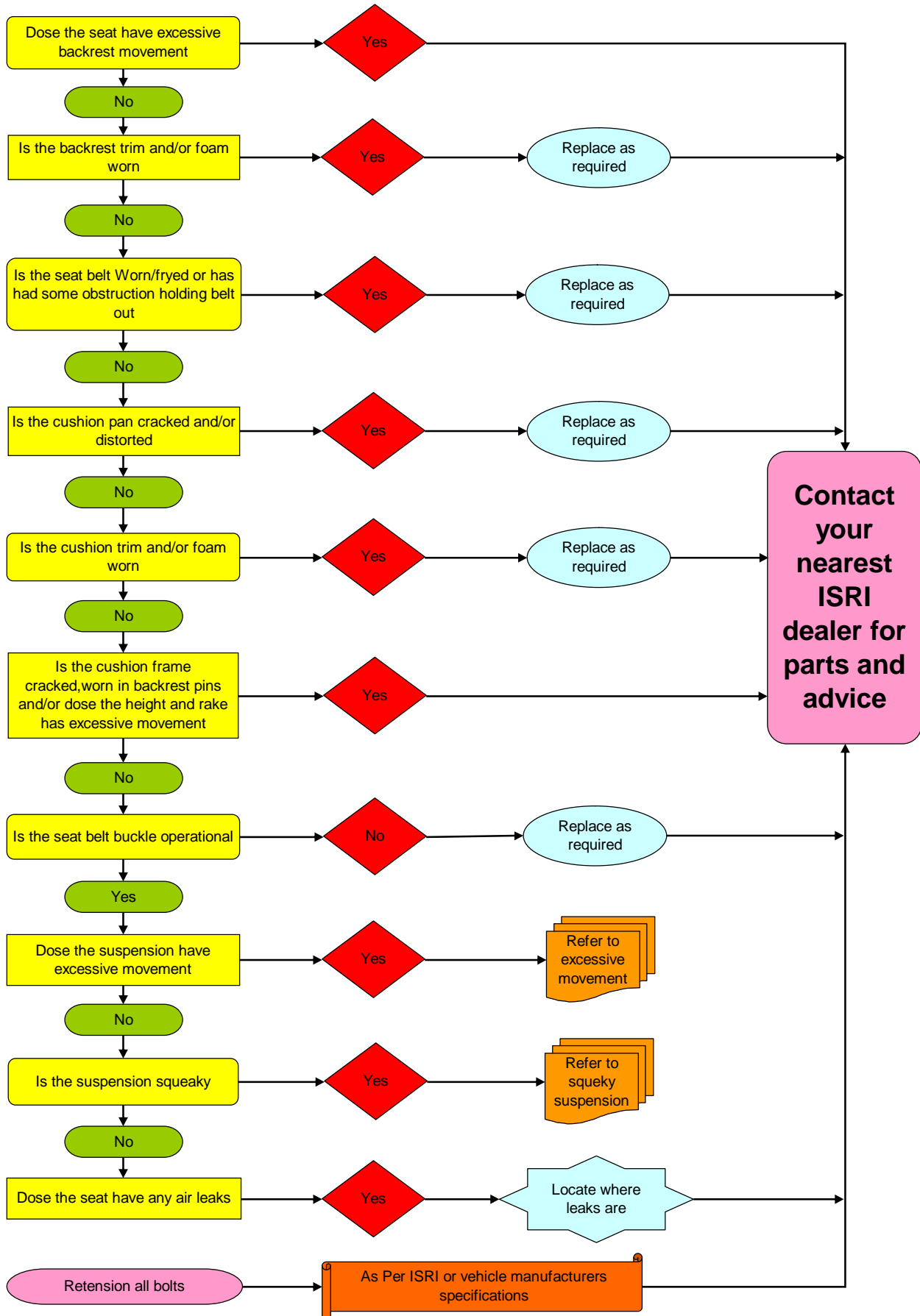
Slide Adjust

Lift slide handle and slide seat back/forward to the required position. Release to lock.

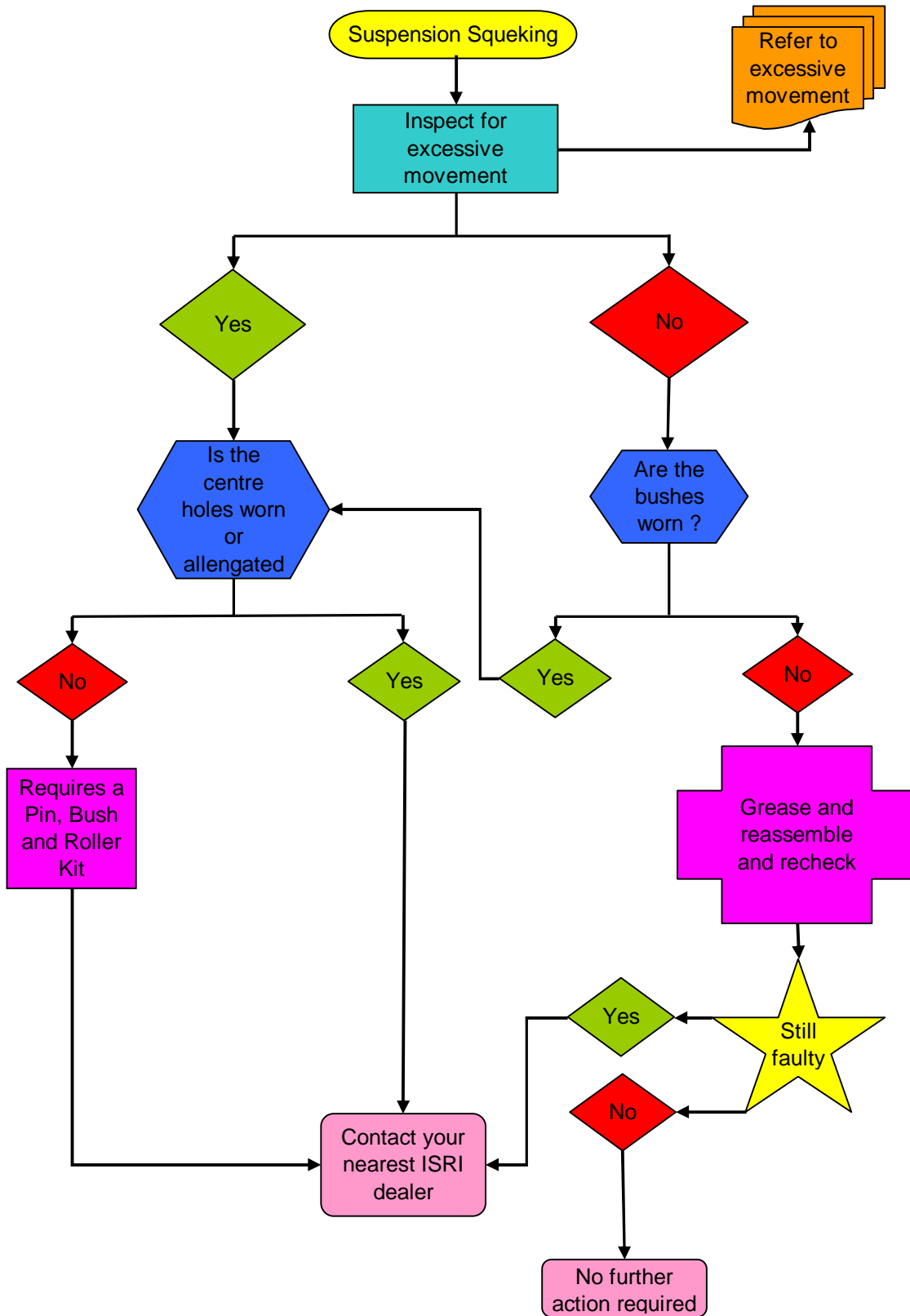
For further information contact ISRI Seats Ph. 02 9756 6199

www.isri.com.au

General Inspection of Seat



Diagnoses for squeaky suspension



Diagnoses for excessive movement in suspension

